



OneNKYTM Summit Series

EDUCATION Session - September 14, 2021

Thank-you to our Education Session Partners:



Thank-you to our Education Session Partners:

- **Dr. Ginni Fair**, Northern Kentucky University
- **Dr. Fernando Figueroa**, Gateway Community & Technical College
- **Dr. Randy Poe**, Northern Kentucky Education Council
- **Dr. Henry Webb**, The Kenton County School District

Thank-you to our Education Session Partners:



**SAVE
THE
DATE**

OneNKY™

Summit Series

presented by OneNKY Alliance

October 27, 2021

3 p.m. – 7 p.m.
Northern Kentucky
University

Owning our voice through OneNKY

Join us as we present new initiatives and identify transformative ways to move our community forward.

Supporting Sessions will feature discussions around proposed solutions to our largest challenges in:

GROWTH

August 31, 2021

Northern Kentucky Tri-ED in partnership with Catalytic Fund, NKY Chamber and Southbank Partners

HEALTH

September 7, 2021

St. Elizabeth in partnership with HealthPoint and NKY Health Department

EDUCATION

September 14, 2021

Northern Kentucky University and Education Partners

Location of the supporting sessions will be available upon registration.

DEI considerations guided by Horizon Fund and Greater Cincinnati Foundation

REGISTER NOW


OneNKYAlliance.com/onenky-summit-rsvp

or scan the QR Code >>>>




Education Session Agenda

Welcome




Karen Finan
OneNKYAlliance



Dr. Ginni Fair
Northern Kentucky University

Keynote



Brigitte Blom
Prichard Committee

Panel Discussion on Education Priorities for NKY

MODERATOR:



Randy Poe
NKYEC

PANELISTS:



Shannon Starkey-Taylor
Learning Grove



Kathy Burkhardt
NaviGo



Chad Molley
Erlanger- Elsmere Schools



Fernando Figueroa
Gateway



Brigitte Blom
Prichard Committee

Breakout Sessions

PREASSIGNED:

- Early Childhood
- Connection to Competencies
- Educational Advancement & Opportunity

Breakout Reports

TABLE LEADS



Close

Education Session Agenda



DEI Consideration for today's program and breakout sessions

Which priority issues and solutions identified within this category will help produce the "Curb Cut Effect"? (The Curb-Cut Effect asserts that an investment in one group can cascade out and up and be a substantial investment in the broader well-being of a community -- one whose policies and practices create an equitable economy, a healthy community of opportunity.)

The solutions to identified priority issues will impact many individuals and groups across the OneNKY metro. What actions or steps should be taken for each solution to support equity for people of color and/or people of low income? For the entire community?

DEI consideration guided by Horizon Community Fund and Greater Cincinnati Foundation

Education Session Agenda

PROBLEM STATEMENT

Early Childhood– NKY children have limited access to early childhood educational resources including pre-k programming and transitional services to elementary school. Success leverages the resources and programs available to all with key measures instituted and tracked.

Guiding Questions

1. What are we doing now in NKY to improve access to early childhood education? Where can we innovate for better solutions and outcomes?
2. What promising practices are emerging in our region? How can we support or amplify those efforts?
3. What is feasible within this priority? What are unintended consequences? Identify expected outcomes and success measures.

PROBLEM STATEMENT

Connection to Competencies–NKY students need better self-awareness of their core competencies and potential long-term career choices. Success is clear pathways and persistent communication to competencies and career pathways.

Guiding Questions

1. How do we leverage results associated with programming like UScience and Work based learning?
2. Where are similar programs successfully implemented and how can we learn from them?
3. What is feasible within this priority? What are unintended consequences? Identify expected outcomes and success measures.

Education Session Agenda



PROBLEM STATEMENT

Educational Advancement & Opportunity– We need to increase the number of college-bound students in NKY to fill key positions in the workforce and realize each individual’s highest potential. Success is the ability of each student to understand and navigate their path to higher education attainment, Key measures instituted and tracked.

Guiding Questions

1. How do we change the culture of NKY to encourage more students or some adults with some college and no credential to obtain post-secondary degrees? What messaging or strategies need to be implemented to showcase the existing path and network available?
2. What resources are not being utilized to help students achieve a post-secondary education? Are there other successful strategies we can utilize?
3. What is feasible within this priority? What are unintended consequences? Identify expected outcomes and success measures.

Kentucky Education Priorities for a Big Bold Future



Brigitte Blom
Prichard Committee



**The
Prichard
Committee**

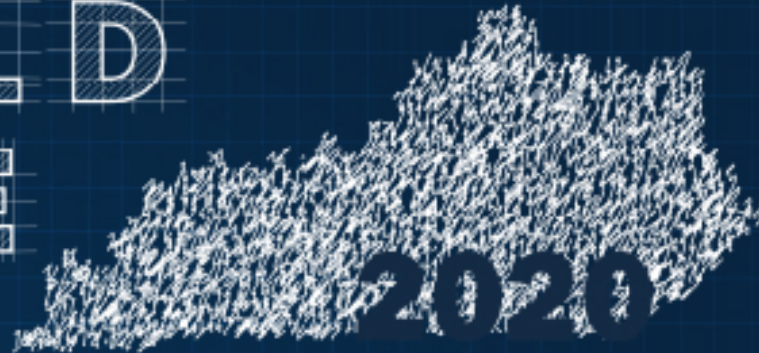
building a
GROUNDSWELL
for a big, bold future



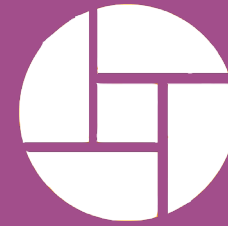
Brigitte Blom Ramsey, President & CEO

BIG BOLD FUTURE

Kentucky's National Rankings Report



The Prichard Committee
Building a Groundswell for Excellent Education



Our Goal

Since the 1980's, Kentucky has moved from the bottom of the national rankings in education to the middle (and even above).

Yet, we still linger 5th from the bottom in poverty.

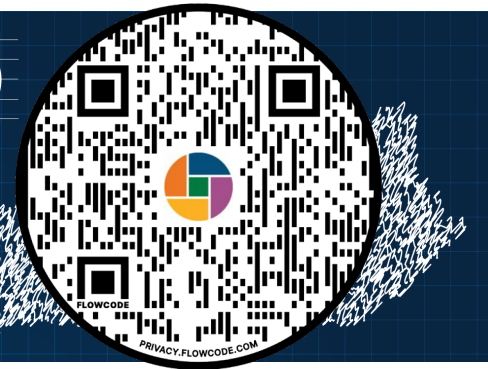
Our goal is to move to the top tier of all states - within this generation – and improve income.

This will require communities responding to the unique needs of students and families locally – A Groundswell.

National Rankings

BIG BOLD FUTURE

2020 National Ranking Report



Early Childhood

Babies with healthy birth weight

 37

Rank Among 50 States

Children above 200% of poverty

 39

Rank Among 50 States

Preschool participation (Ages 3-4)

 37

Rank Among 50 States

4th grade reading proficiency

 26

Rank Among 50 States

8th grade math proficiency

 39

Rank Among 50 States

High school graduation

 3

Rank Among 50 States

Higher Education

Postsecondary enrollment (18-24)

 40

Rank Among 50 States

Graduation from 2-year institutions

 19

Rank Among 50 States

Graduation from 4-year institutions

 32

Rank Among 50 States

K-12 Students

Quality of Life

Associate degree or higher (25-64)

 44

Rank Among 50 States

Voter turnout

 25

U.S. Ranking

Median household income

 44

Rank Among 50 States


High speed internet access

42

Rank Among 50 States

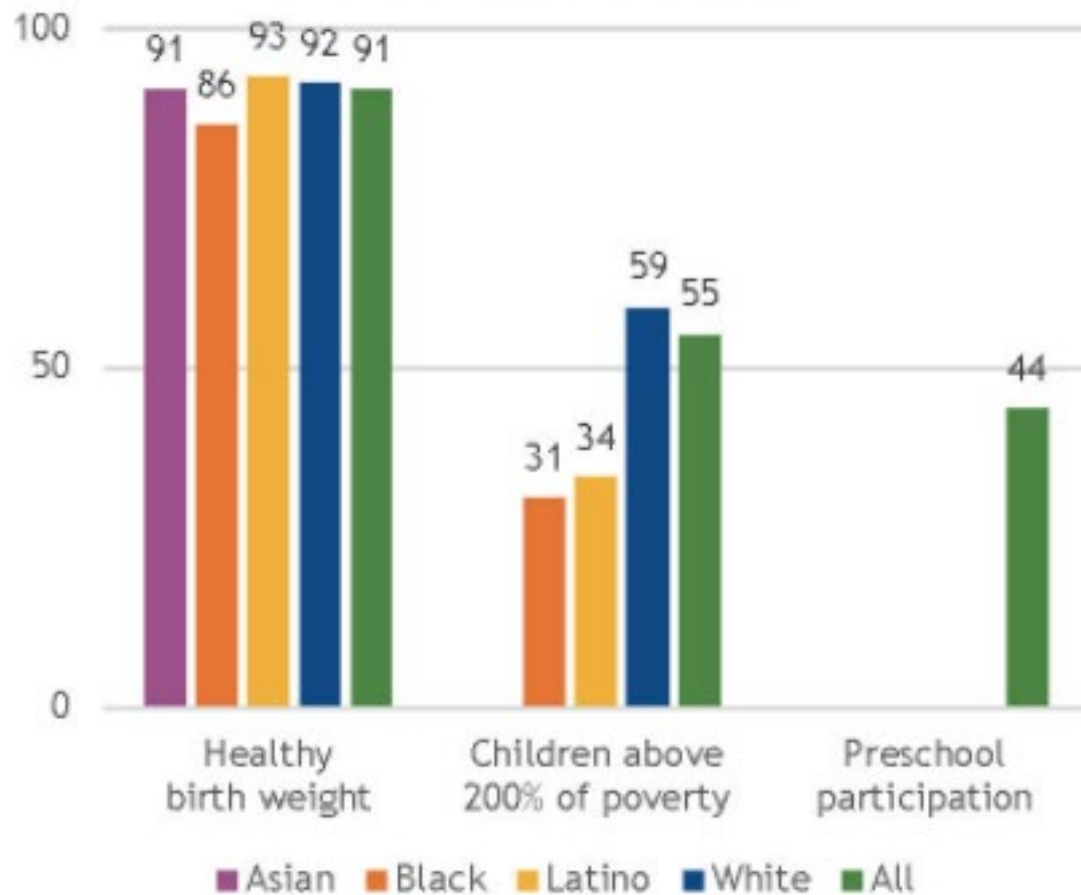
82% of Kentuckians had access to broadband internet in 2018.



Equity Rankings

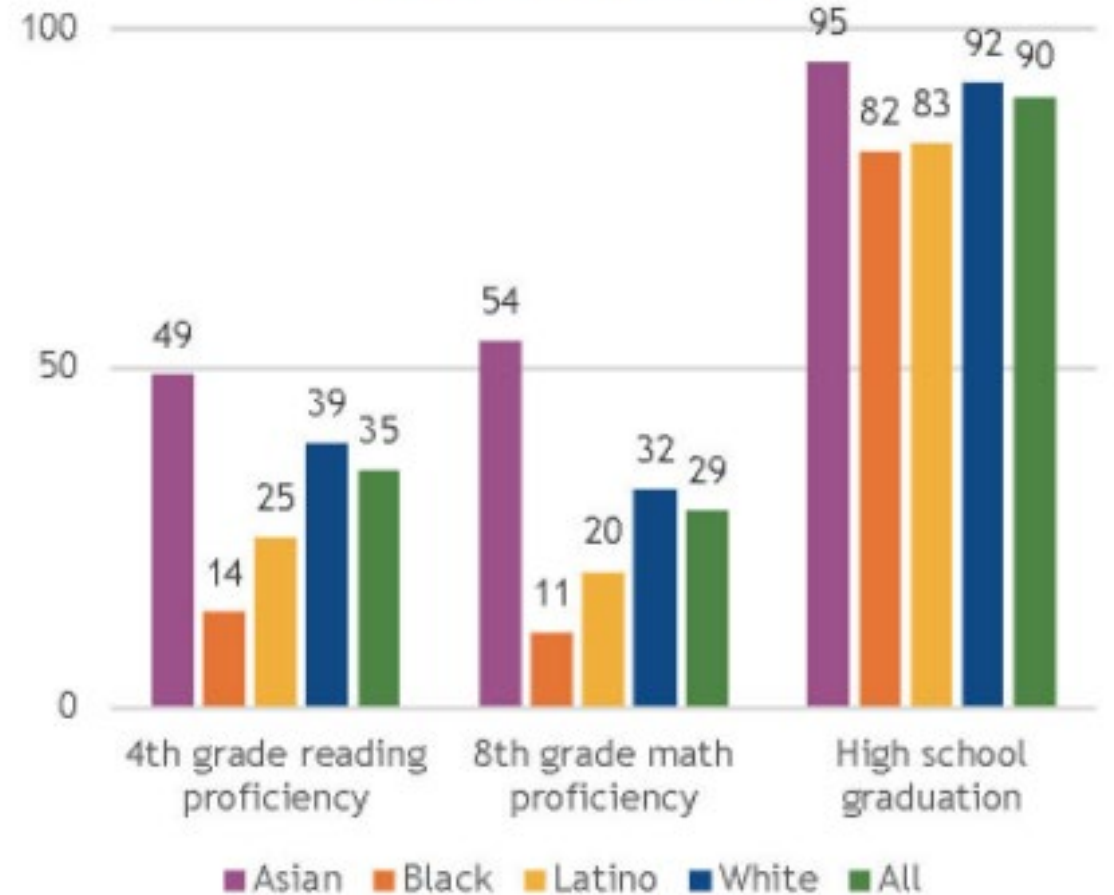
Early Childhood

Groups (Percent)



K-12 Students

Groups (Percent)

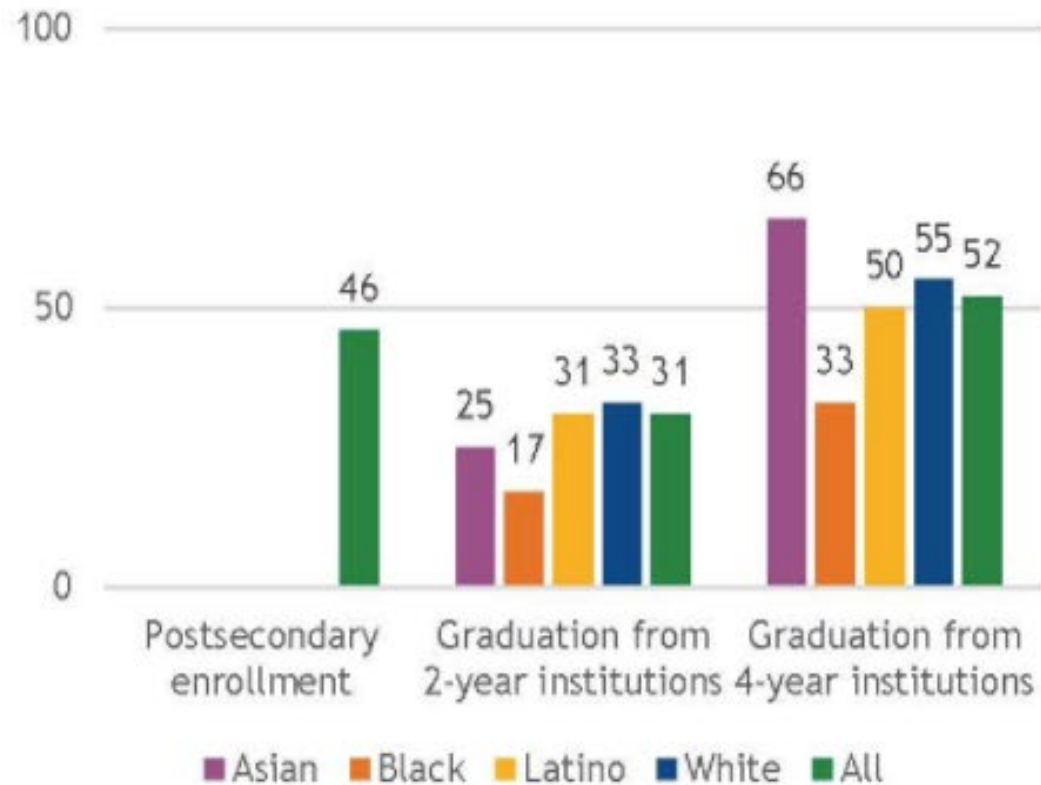




Equity Rankings

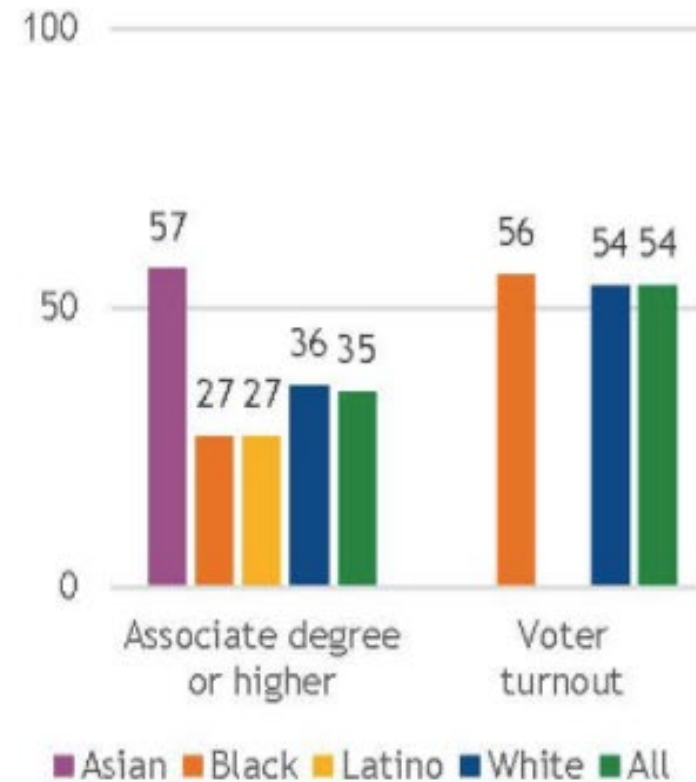
Higher Education

Groups (Percent)

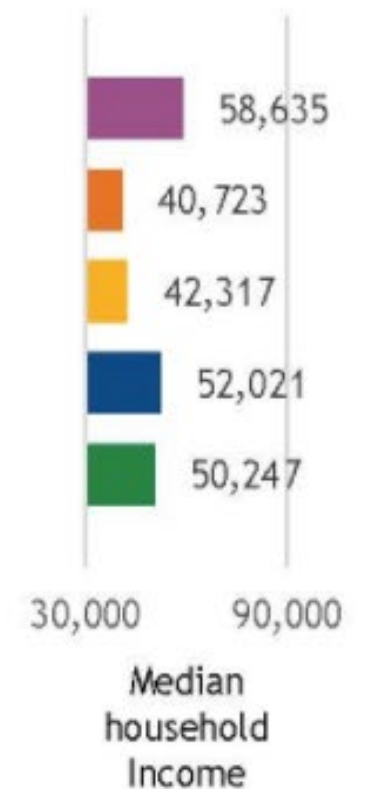


Quality of Life

Groups (Percent)



Groups (\$)



Excellence with Equity: It's Everybody's Business

Findings and Recommendations from the Achievement Gap Study Group



July 2016

Achieving excellence with equity will mean:

Excellence. Kentucky students of all backgrounds will learn at much higher levels. Evidence of this progress will be visible on meaningful indicators of academic achievement and educational attainment.

Equity. Students in the groups that have historically had less opportunity to excel – students with low family incomes, African American students, Hispanic and Latino students, Native American students, students with learning differences, and students learning English – will catch up with their peers.



CAMPBELL COUNTY PUBLIC SCHOOLS CAMPBELL COUNTY

WHY DOES EDUCATION MATTER?



HIGHER INCOME



BETTER JOB OPPORTUNITIES



IMPROVED HEALTH



MORE CIVIC INVOLVEMENT



LOWER PUBLIC ASSISTANCE

WHAT IS YOUR COMMUNITY'S STORY?

Every community has a unique story to tell. Many things contribute to the success of a community, but research shows that the key is a high-quality education system. This Community Profile shares data about how students in your community are progressing along their educational path. The full story of your community cannot be told by numbers alone - it must also be told through the stories and experiences of all the people who live there. This profile is meant to be a guide to help you and your neighbors explore how to pave the path to a larger life through education.

The power to transform your community is in your hands. All it takes is one. One person to begin the conversation. One person stepping forward to change the future of a community.



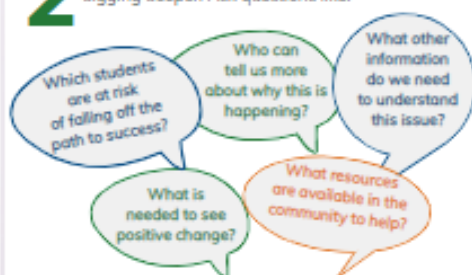
WHAT CAN YOU DO?

BE THE ONE TO START A CONVERSATION ABOUT THE FUTURE OF YOUR COMMUNITY.

1 Start by using this Community Profile to identify areas of your community's education performance you want to change. Share with a neighbor and ask questions like:

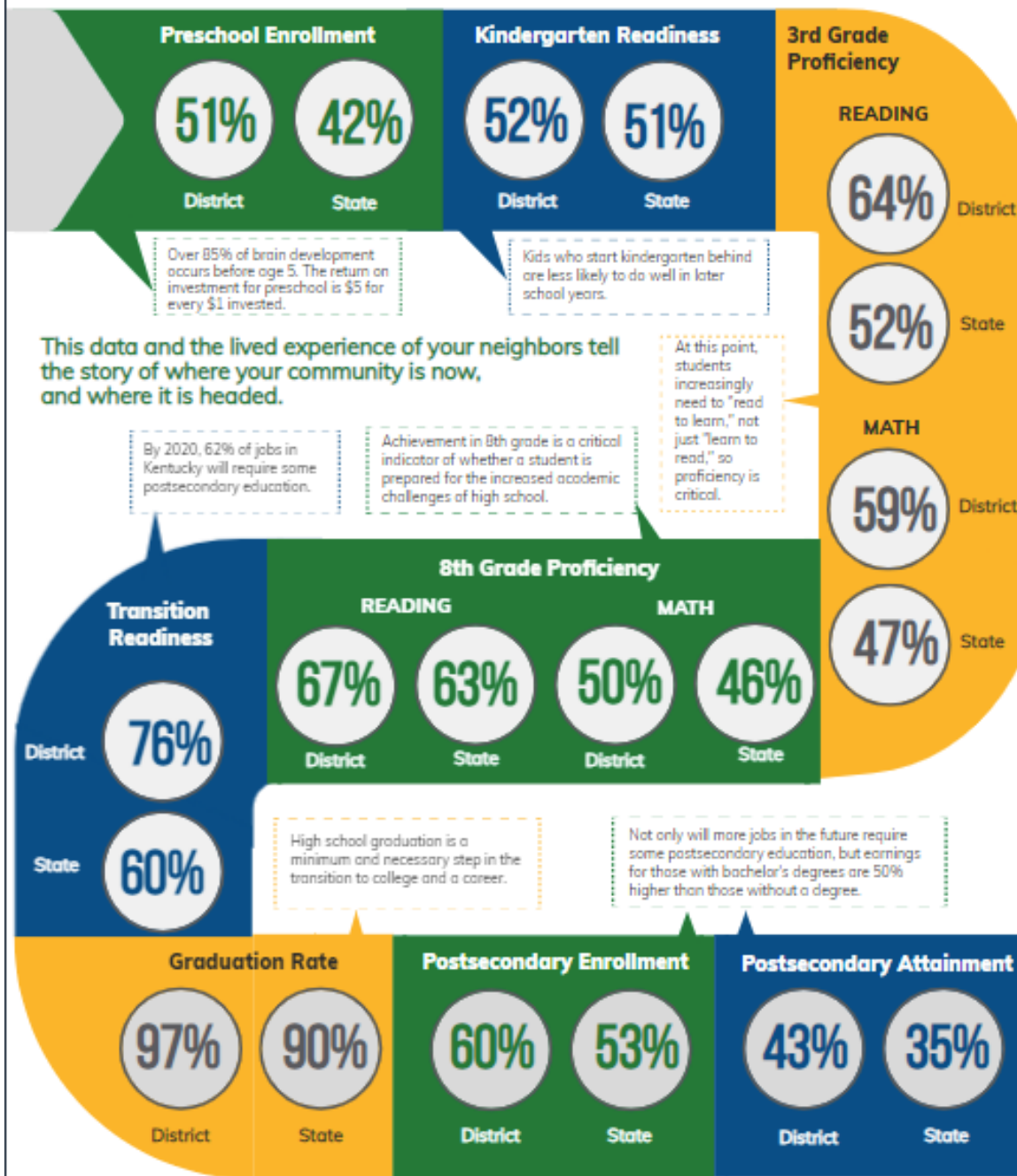


2 Find one thing you want to change and start digging deeper. Ask questions like:



3 Seek out people in your community to find answers. Bring others into the conversation. Push your friends and neighbors to think differently about how education works, and then take action together.

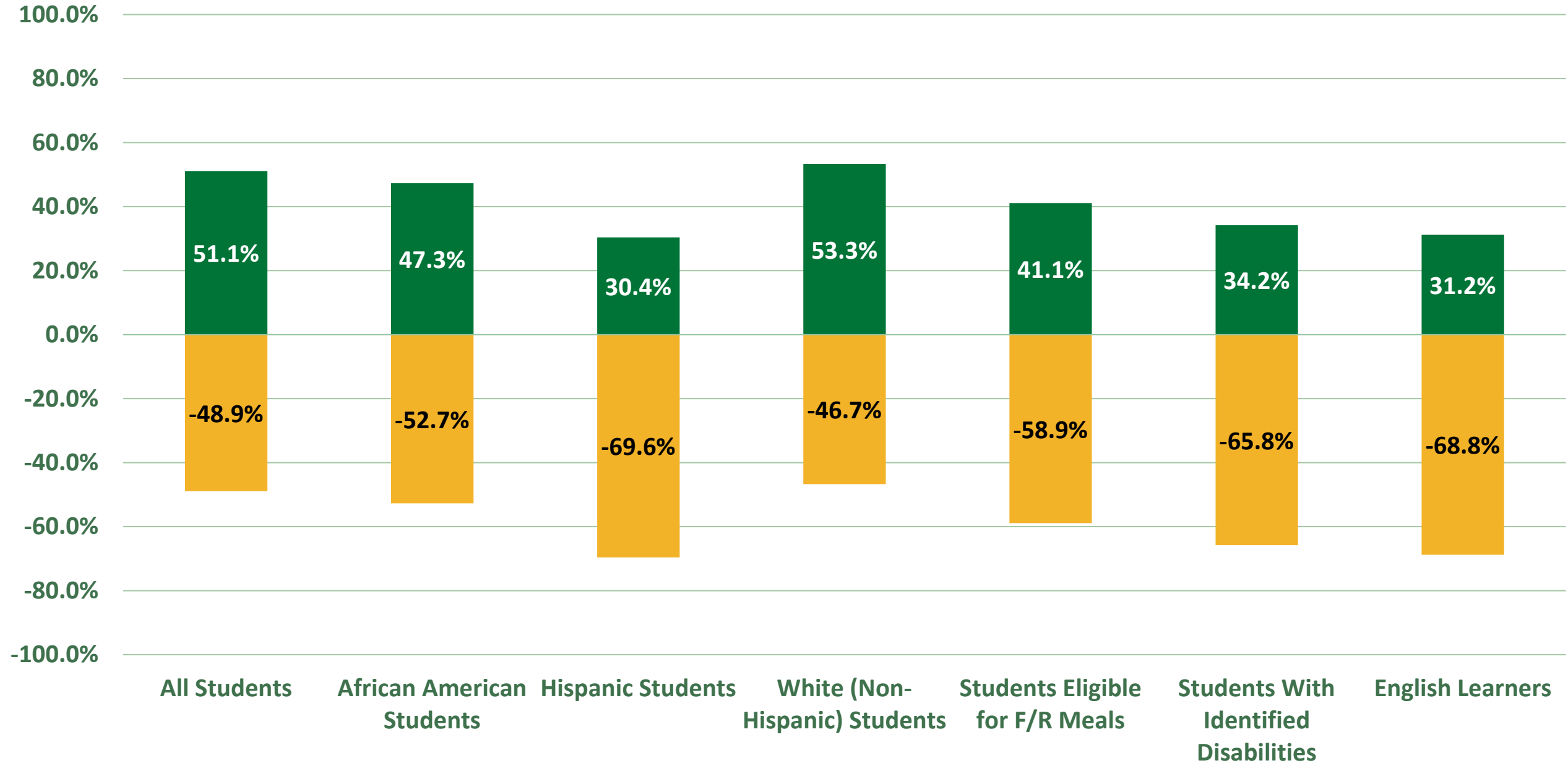
HOW ARE STUDENTS DOING ON THE PATH TO A SUCCESSFUL LIFE?



KINDERGARTEN READINESS - K-SCREEN - 2019

■ % of Children Screening Ready for Kindergarten

■ % of Children Screening NOT Ready for Kindergarten



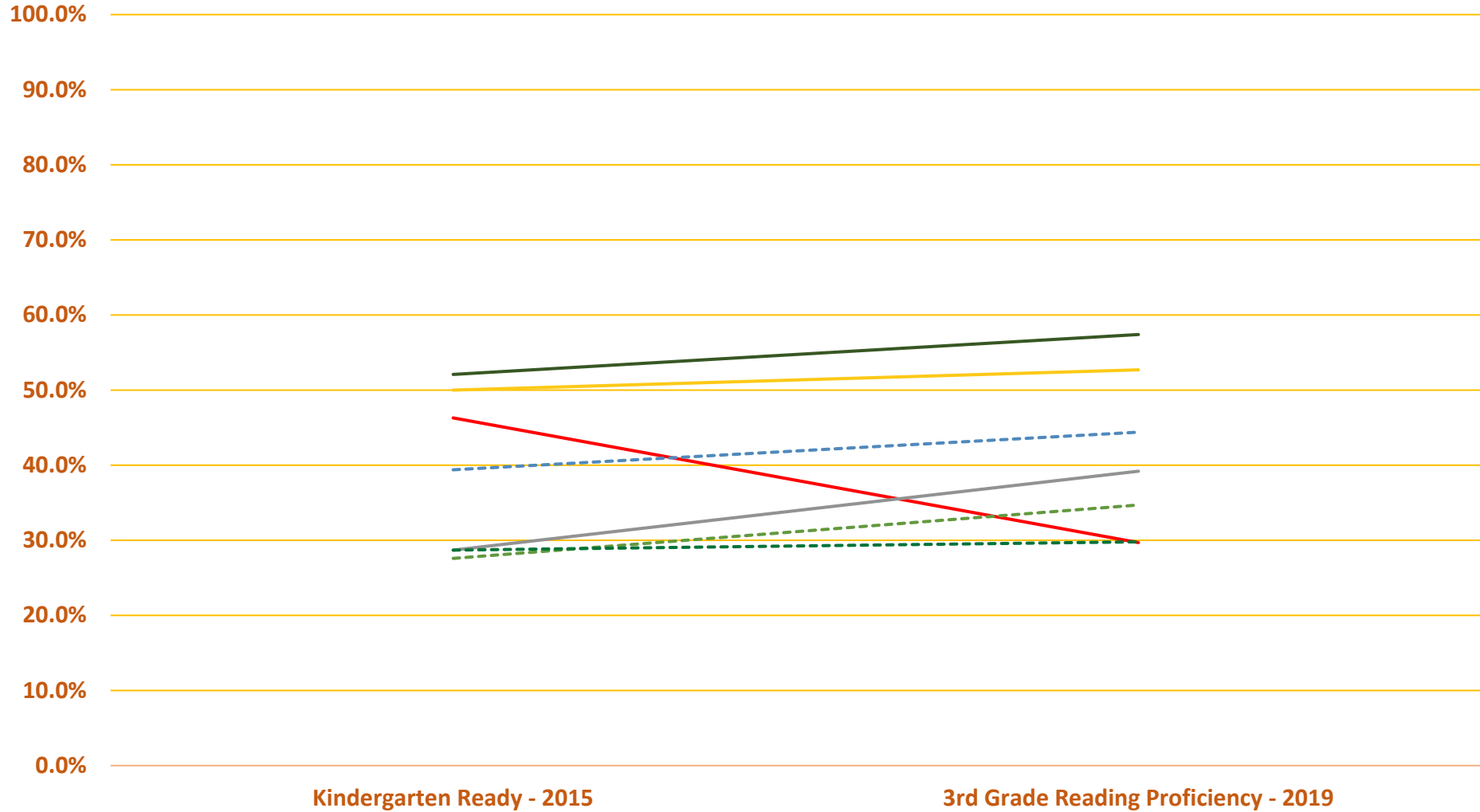
Kindergarten Readiness Leads to Future Success



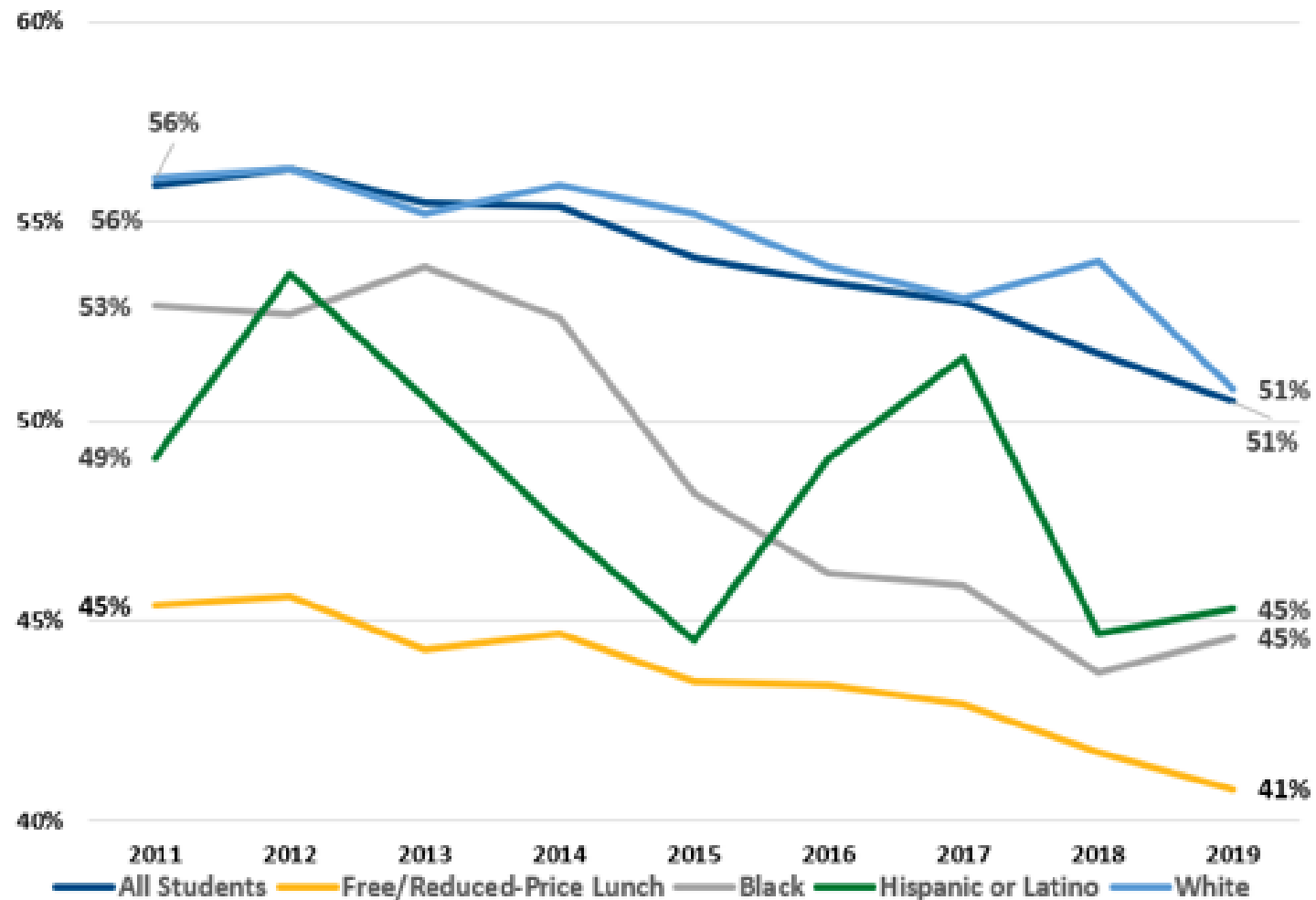
Kindergarten readiness correlates with greater proficiency in 3rd grade. In this case, you can see in the colored waves how K-readiness translates to greater proficiency in 3rd grade reading.

2015 K-READINESS -vs- 2019 3rd GRADE READING

- All Students
- Hispanic Students
- Students Eligible for F/R Meals
- English Learners
- African American Students
- White (Non-Hispanic) Students
- Students With Identified Disabilities



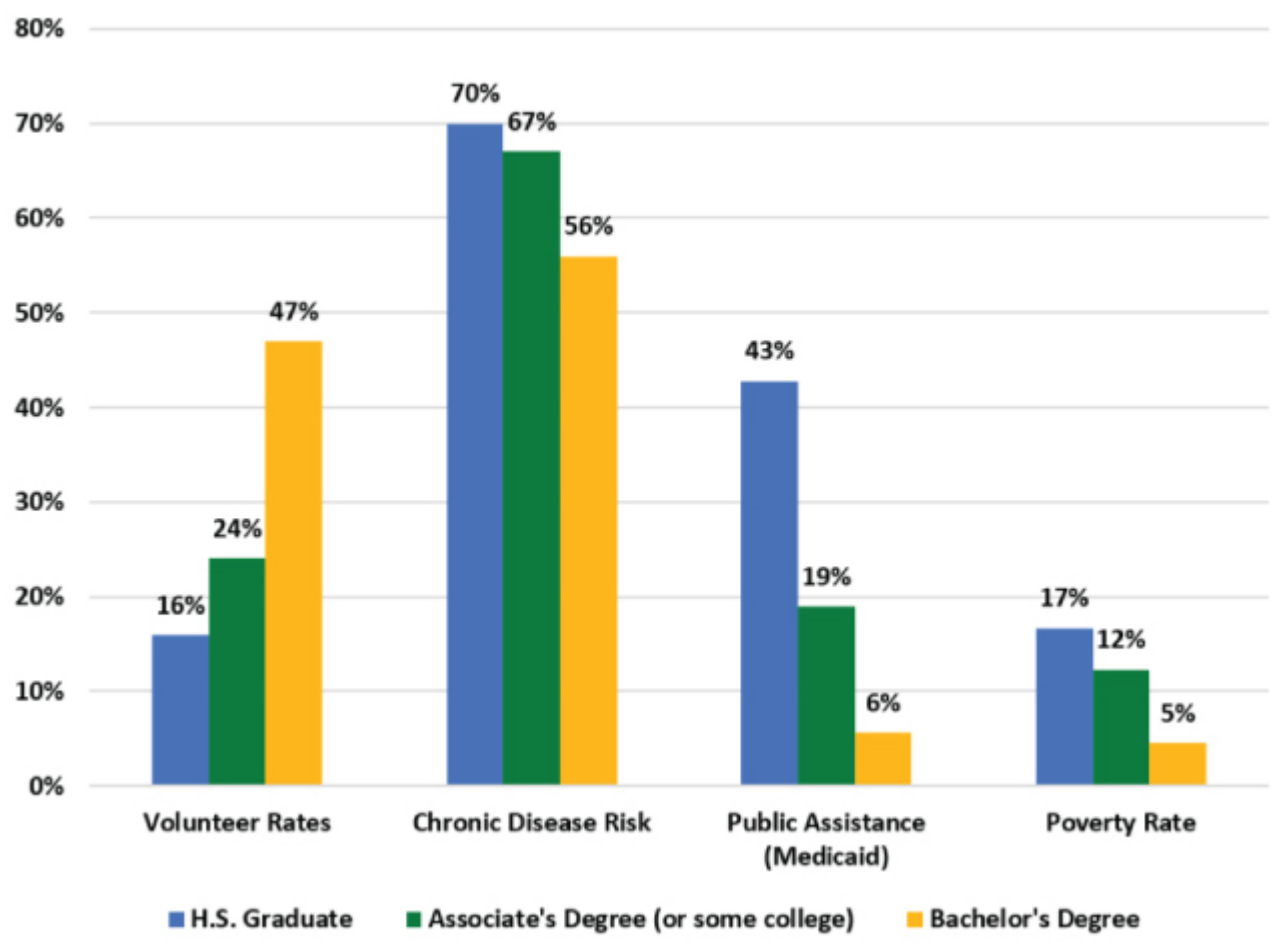
Kentucky: In-State College-Going of Public High School Graduates - 2011 to 2019



College
Going
Is Declining

Quality of Life Increases With Higher Education Attainment

Kentucky: Select Characteristics by Education Level

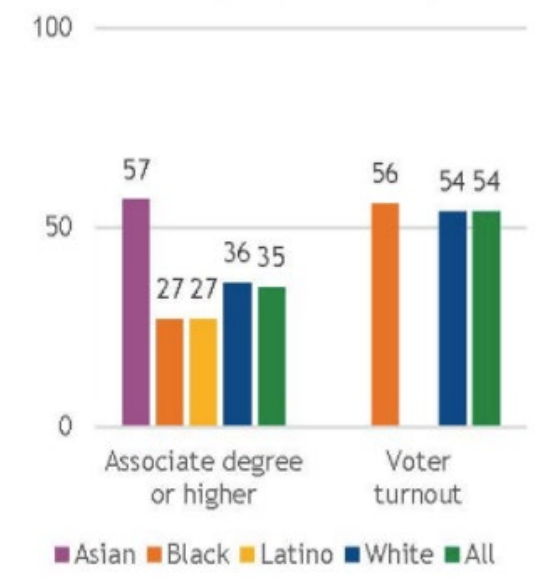


Associate degree or higher (25-64)



Rank Among 50 States

Groups (Percent)



College-going Challenges

Students feel conflicted about the value of college.

Kentucky's FAFSA completion rate by high school seniors down

19%

from the previous year.

47.5%

Do not believe some level of college education is required for a successful career. Another 10% are unsure.



Percentage based on the number of Kentucky high school seniors filling out the FAFSA in Jan. 2021 compared to Jan. 2020.
Source: Form Your Future FAFSA Tracker.

#KyHigherEdMatters

Early Childhood

Babies with
healthy
birth weight

 37

Rank Among 50 States

Children
above 200% of
poverty

 39

Rank Among 50 States

Preschool
participation
(Ages 3-4)

 37

Rank Among 50 States

Leading Local Metrics

Preschool enrollment

Kindergarten readiness

A GROUNDSWELL

State Policy & Investment

- Increase childcare and preschool reimbursement rates to meet cost of quality
- Increase eligibility for childcare assistance & preschool to 200% of federal poverty level
- Expand HANDS home visiting

Local Practice - GROUNDSWELL

- Kindergarten readiness campaigns
- Multi-year strategic plan for early childhood ecosystem
- Meaningful family engagement

K-12 Students

4th grade
reading
proficiency

 26

Rank Among 50 States

8th grade
math
proficiency

 39

Rank Among 50 States

High school
graduation

 3

Rank Among 50 States

Leading Local Metrics

3rd grade reading/math proficiency

8th grade reading/math proficiency

Transition readiness

Broadband access

A GROUNDSWELL

State Policy & Investment

- Fully fund school transportation & all-day kindergarten
- Establish a Fund for Teaching Excellence
- Improve early literacy and math teaching skills for educators

Local Practice - GROUNDSWELL

- Adequate local funding for education
- Plans to improve student outcomes
- Community FAFSA completion campaigns
- Meaningful family engagement
- Community supported tutoring and mentoring

Higher Education

Postsecondary
enrollment
(18-24)



40

Rank Among 50 States

Graduation
from 2-year
institutions



19

Rank Among 50 States

Graduation
from 4-year
institutions



32

Rank Among 50 States

Leading Local Metrics

Postsecondary enrollment

Postsecondary attainment

A GROUNDSWELL

State Policy & Investment

- College affordability
- High-quality dual credit for high school students
- Performance-Based Funding for public universities & colleges

Local Practice - GROUNDSWELL

- Local campaigns that connect every student to a higher education path.
- Community-based high school to college transition supports



The Prichard Committee

Building a Groundswell
for a Big, Bold Future

prichardcommittee.org



Brigitte Blom Ramsey

Prichard Committee President & CEO

 [@Brigitte_Blom](https://twitter.com/Brigitte_Blom)

Panel Discussion on Education

MODERATOR:



**Randy
Poe**
NKYEC

EDUCATION PANELISTS:



**Shannon
Starkey-Taylor**
Learning
Grove



Chad Molley
Erlanger-
Elsmere
Schools



**Kathy
Burkhardt**
NaviGo



**Fernando
Figueroa**
Gateway



**Brigitte
Blom**
Prichard
Committee

- **Alecia Webb Edgington**
Life Learning Center
- **Brittany Corde**
Greater Cincinnati Foundation
- **Stacy Strotman**
Covington Partners
- **Henry Webb**
Kenton County Schools
- **Eileen Shanahan**
NKU
- **Denise Govan**
Life Learning Center
- **Amanda Johannemann**
Northern Kentucky Chamber

Breakout Session Table Leaders

Breakout Groups

Group Reports

**SAVE
THE
DATE**

OneNKY™

Summit Series

presented by OneNKY Alliance

October 27, 2021

3 p.m. – 7 p.m.
Northern Kentucky
University

Owning our voice through OneNKY

Join us as we present new initiatives and identify transformative ways to move our community forward.

Supporting Sessions will feature discussions around proposed solutions to our largest challenges in:

GROWTH

August 31, 2021

Northern Kentucky Tri-ED in partnership with Catalytic Fund, NKY Chamber and Southbank Partners

HEALTH

September 7, 2021

St. Elizabeth in partnership with HealthPoint and NKY Health Department

EDUCATION

September 14, 2021

Northern Kentucky University and Education Partners

Location of the supporting sessions will be available upon registration.

DEI considerations guided by Horizon Fund and Greater Cincinnati Foundation

REGISTER NOW

OneNKYAlliance.com/onenky-summit-rsvp

or scan the QR Code >>>>

